



This third quarter report of 2022 provides an update of the activities completed in this quarter, the data available and key statistics and metrics gathered from insights collected by the project team and the strategic partners and general partners.

### News and Media

With the help of the Satellite Data Program team the Pulitzer Centre Rainforest Investigations Network published their investigation into [The Illegal Airstrips Bringing Toxic Mining to Brazil's Indigenous Land](#) in the New York Times.



With an **updated Resource hub** allowing users to follow self guided tutorials, find information on the program, on webinars and use case examples, the Satellite Data Program also launched a Community forum where users of the program could come together and share their experiences, support each other and help foster new collaborations where possible.

The **Satellite Data Program** launched its own **Twitter account** in August 2022 with the aim to make it easier for users to interact with the program and program partners and also for the program to share updates on Twitter which is the central social network used by the science and research community. Gathering 250 followers in the first 2 months.

### Activities

- Continued delivery of monthly mosaics.
- User outreach and support across user groups.
- Database of Users Stories continually updated and organised by user group.
- Continued outreach with Purpose Allies/Strategic partners with quarterly meetings.
- Ongoing delivery of Level 1 monthly mosaics.
- Ongoing support to Level 2 users.
- Ongoing support to Purpose Allies/Platform partners with quarterly meetings.
- User Survey circulated to all registered users.
- Launch of Program Twitter account @NICFISatData.
- Launch of Program Community Forum.
- Continue to build momentum in engagement activities including to new groups and initiatives.
- Ongoing outreach with other geospatial software and platform providers at both local and global scale with a prioritisation of user community needs.
- Capacity building support with key users.

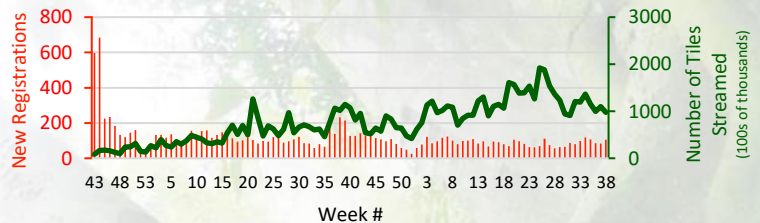
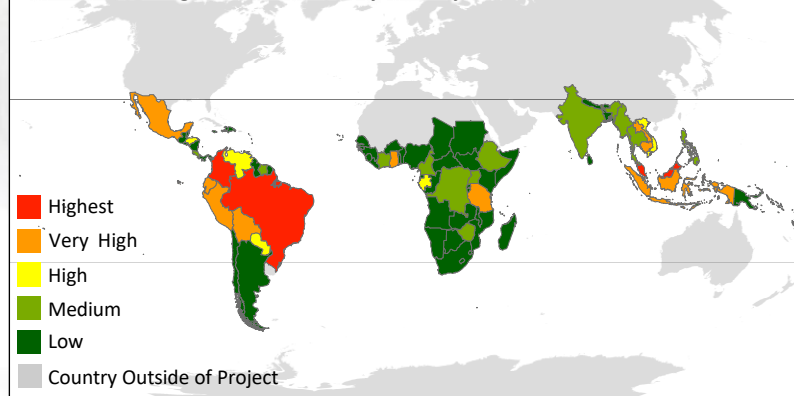
### Events

- Pulitzer centre workshops 20<sup>th</sup> July and 3<sup>rd</sup> August
- Global Partnership and Planet on NICFI Satellite Data Program – 3<sup>rd</sup> August (virtual)
- FOSS4G – Italy, 22-28<sup>th</sup> August
- Science User Roundtable – 26<sup>th</sup> September
- ForestSat – Germany, 29<sup>th</sup> Aug – 2<sup>nd</sup> Sept
- [GFOI Webinar series 7/8/9<sup>th</sup> Sept](#)

### Resources and Helpdesk

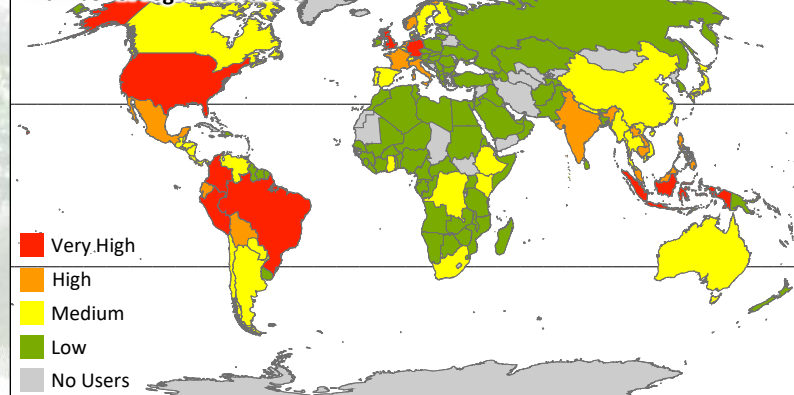
Tier one support has handled 45 tickets in this quarter (390 overall + 356 overall Tier 1 requests sent directly to Planet) with issues or questions typically resolved within hours. Most commonly these have been on topics of download and discovery, access through other platforms such as GEE. Additional support material has been generated, and the launch page has been redesigned to make things more visible and accessible with links to enablement materials such as FAQs and User guides available in five languages (English, Spanish, French, Portuguese and Bahasa Indonesian).

Number of image tiles streamed by country



**97 countries** included in the NICFI program with over 15,600 registered users from **158 countries** worldwide. To date, **61.7 million tiles** streamed from Planet Explorer.

Number of registered users





# NICFI SATELLITE DATA PROGRAM 2022 Q3 Update

**KSAT**  
KONGSBERG SATELLITE SERVICES

planet.

**AIRBUS**

## Publications

Some examples of journal articles using the Satellite Data Program are below:

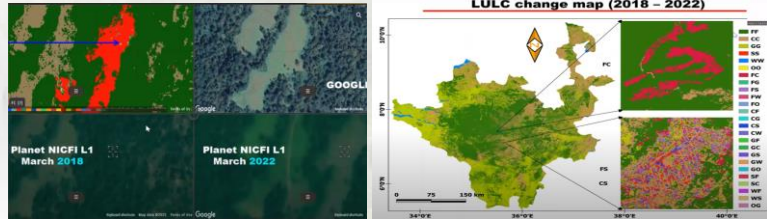
- [A consistent assessment of trees inside and outside forests improves estimates of total tree cover in Africa](#)
- [High-resolution Planet satellite imagery and multi-temporal surveys to predict risk of tree mortality](#)
- [Technology and State Capacity: Experimental Evidence from Illegal Mining in Colombia](#)

## Activities next Quarter

- Ongoing delivery of Level 1 monthly mosaics.
- Ongoing support to Level 2 users.
- Onboard new Purpose Allies Restor and continue working with UN Biodiversity Lab.
- Ongoing support to Purpose Allies/Platform partners with quarterly meetings.
- Continue to build momentum in engagement activities including to new groups and initiatives.
- Ongoing outreach with other geospatial software and platform providers where relevant.
- Continue to populate user stories database and resource hub with community and program led resources.
- Plan for events in 2023.
- Support Project Evaluation process.
- User Survey Analysis.
- Events
  - Program Y2 Annual Meeting – 4/5<sup>th</sup> October, France
  - GEO4GOOD – 4-6<sup>th</sup> October, USA
  - UpLink – 19<sup>th</sup> Oct (online)
  - UNFAO Science & Innovation Conference – 20<sup>th</sup> Oct (online)
  - GEOWeek – (virtual attendance) 31<sup>st</sup> October
  - COP27 – 6-18<sup>th</sup> November, Egypt
  - Indigenous round table - TBD November
  - COP15 – 7-19<sup>th</sup> December, Canada
  - AGU – 12-16<sup>th</sup> December, USA

## User Stories

[Forest Resources Assessment and Monitoring Directorate of Ethiopia](#) is using the NICFI Satellite Data Program data with assistance from UN-FAO. The Images are used for LULC Change detection. The Objective was to monitor REDD+ Intervention Sites in South Western forest block of Ethiopia for the period 2018-2022. They have reported the simplified data access and tools provided by SEPAL Platform are crucial to the success of their analysis and plan to expand use to Tree Cover in addition to Forest Cover in their analysis.



Rainforest Foundation US are facilitating training in the use of the NICFI Satellite Data Program data to 5 indigenous organization and 33 Amazonian native peoples from Kichwa, Shipibo and Ticuna communities. The basemaps are downloaded in satellite information hubs and transformed into android from and then shared with native communities. The community patrols can then use the basemaps on their smartphones, without the need for internet access, to plan patrols to validate early deforestation alerts and build evidence, along with information from the patrols to help identify causes of forest loss, those responsible and where relevant file complains with authorities. This data improves planning and security of forest patrols and facilitates measurement of compliance with family conservation agreements.



[Fundación para la Conservación y el Desarrollo Perú \(FCDS\)](#) published a story on LinkedIn on how this data is helping them understand forest change in the Tinigua NNP (National Natural Park) where the current panorama is very serious. Located in an area of high environmental importance in Colombia, connecting the Amazon with the Andes and the Orinoquia, it is sadly being threatened and is currently highly intervened and fragmented south of the Guayabero River.

According to the FCDS in the last 31 years this protected natural area has lost about 70,000 hectares. The image shown was captured February 2022 and it is possible to see an active fire west of the Guayabero River, which shows the current expansion of the agricultural frontier. This may be the first National Park in Colombia to disappear.



## Purpose Allies



SINCE NOV 2020

~9k selections of the Planet-NICFI Basemap per month



SINCE APR 2021

11k users  
60k views  
23k sessions



SINCE NOV 2020

~300k tile views per month  
35 analysis per week



SINCE DEC 2021

167 views of NICFI related forum posts



UPCOMING  
IN Q4 2022

## Outreach Partners



Microsoft



@NICFISatData

## Partner profile – Microsoft Planetary Computer

The Planetary Computer combines a multi-petabyte catalog of global environmental data with intuitive APIs, a flexible scientific environment that allows users to answer global questions about that data, and applications that put those answers in the hands of conservation stakeholders. Users from all over the world are building on top of the Planetary Computer platform providing the actionable information that is critical to sustainability practitioners. Selected Level 1 mosaics are available in Planetary computer in support of the [GEO RFP winners](#).